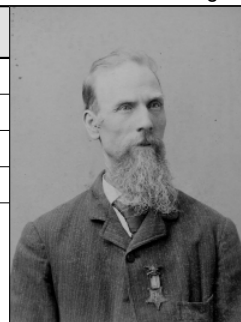


Thomas Albert Armstrong

Husband		Thomas Albert Armstrong	
Born	Cir 1841	Schenectady, NY ¹	
Christened			
Died	17 Aug 1891	New Dungeness, Clallam, WA ²	
Cause of Death	Shock and internal hemorrhage; accident crushed by log ³		
Buried	Aug 1891	Sequim, Clallam, WA ⁴	
Father	Thomas Armstrong (1799-1875)		
Mother	Jane Abbott (1799-1881)		
Marriage	4 Jul 1862	Livonia Township, Wayne, MI ⁵	



Events

1. He appeared on the census on 26 Aug 1850 in Livonia Township, Wayne, MI.⁶
2. 1860 Census: 6 Jun 1860, Redford, Wayne, MI.⁷
3. He served in the military C Co, 24th MI Infantry on 9 Aug 1862 in Plymouth, Wayne, MI.⁸
4. Patient: Convent Hospital, 6 Oct 1862, Frederick, MD.⁹
5. He was discharged from the military on 13 Nov 1862 in Frederick, MD.¹⁰
6. 1870 Census: 11 Jun 1870, Livonia Township, Wayne, MI.¹¹
7. He appeared on the census on 3 Jul 1880 in Livonia, Wayne, MI.¹²
8. He was contained in a pension record on 27 Mar 1886.¹³
9. Resided: 28 Mar 1890, Livonia, Wayne, MI.¹⁴
10. He appeared on the census in 1890 in Livonia, Wayne, MI.¹⁵

Wife		Almira Clarissa Melody	
Born	15 Oct 1845	Oakland County, MI ¹²	
Christened			
Died	18 Dec 1920	Los Angeles, Los Angeles, CA ¹⁶	
Buried		Glendale, Los Angeles, CA	
Father			
Mother	Jane A. Stilson (Cir 1811-1874)		



Events

1. She appeared on the census on 6 Jun 1860 in Novi, Oakland, MI.¹⁷
2. 1870 Census: 11 Jun 1870, Livonia Township, Wayne, MI.¹¹
3. She appeared on the census on 3 Jul 1880 in Livonia, Wayne, MI.¹²
4. She had a residence on 14 Nov 1891 in Port William, Clallam, WA.¹⁸
5. Mortgagee: 5 lots in Peninsular Addition #3, 17 Apr 1895, Portland, Multnomah, OR.¹⁹

Thomas Albert Armstrong

6. She had a residence in Jan 1897 in Los Angeles, Los Angeles, CA.²⁰

7. Widow's Pension: 13 Apr 1897.²¹

Children

1	F	Ellen Armstrong	
Born		Cir 1865	MI ¹²
Christened			
Died			
Buried			
Spouse			
Events			
1. 1870 Census: 11 Jun 1870, Livonia Township, Wayne, MI. ¹¹			
2. She appeared on the census on 3 Jul 1880 in Livonia, Wayne, MI. ¹²			
2	M	Steven A. Armstrong	
Born		Cir 1867	MI ¹²
Christened			
Died			
Buried			
Spouse			
Events			
1. 1870 Census: 11 Jun 1870, Livonia Township, Wayne, MI. ¹¹			
2. He appeared on the census on 3 Jul 1880 in Livonia, Wayne, MI. ¹²			
3. Mortgagee: 5 lots in Peninsular Addition #3, 17 Apr 1895, Portland, Multnomah, OR. ¹⁹			
3	M	Earl Armstrong	
Born		Cir 1869	MI ¹²
Christened			
Died			
Buried			
Spouse			
Events			
1. 1870 Census: 11 Jun 1870, Livonia Township, Wayne, MI. ¹¹			
2. He appeared on the census on 3 Jul 1880 in Livonia, Wayne, MI. ¹²			
4	M	John Armstrong	
Born		Cir 1872	MI ¹²
Christened			
Died			
Buried			
Spouse			
Events			
1. He appeared on the census on 3 Jul 1880 in Livonia, Wayne, MI.			
5	F	Clara Armstrong	
Born		Cir 1875	MI ¹²
Christened			
Died			
Buried			
Spouse			

Children (cont.)
Events
1. She appeared on the census on 3 Jul 1880 in Livonia, Wayne, MI. ¹²
General Notes: Husband - Thomas Albert Armstrong
Otis Southworth is a cousin. Uncle of James Rawson's wife.
Source Citations
<ol style="list-style-type: none"> 1. <i>Thomas Armstrong entry, 1850 US Census, Population Schedule, Livonia Township, Wayne, MI (National Archives Microfilm Publication M432, Roll 366), p. 352. Thomas A. Armstrong, Pension Application #567461, certificate #453710; Record Group 15; Department of Veterans Affairs; National Archives Building, Washington, DC, p. 11.</i> 2. <i>Thomas A. Armstrong, Pension Application #567461, certificate #453710; Record Group 15; Department of Veterans Affairs; National Archives Building, Washington, DC, p. 84. Thomas A. Armstrong, Death Record #3, Clallam County (Washington) Death Returns.</i> 3. <i>Thomas A. Armstrong, Death Record #3, Clallam County (Washington) Death Returns.</i> 4. Claud and Suzanne Bell, "Sequim View Cemetery Transcripts" (http://ftp.rootsweb.com/pub/usgenweb/wa/clallam/cemetery/sequimvw.txt), 32. 5. <i>Thomas A. Armstrong, Pension Application #567461, certificate #453710; Record Group 15; Department of Veterans Affairs; National Archives Building, Washington, DC, p. 43, 85.</i> 6. <i>Thomas Armstrong entry, 1850 US Census, Population Schedule, Livonia Township, Wayne, MI (National Archives Microfilm Publication M432, Roll 366), p. 352.</i> 7. <i>Livonia 1860 Census (National Archives Microfilm Publication M653, roll 564), p. 287.</i> 8. <i>Thomas A. Armstrong, Co. C, 24 Michigan Infantry, Compiled Military Service Records of Volunteer Soldiers Who Served From the State of MI, Record Group 94: Records of the Adjutant General's Office., p. 4.</i> 9. <i>Thomas A. Armstrong, Pension Application #567461, certificate #453710; Record Group 15; Department of Veterans Affairs; National Archives Building, Washington, DC, p. 5 & 10. Thomas A. Armstrong, Co. C, 24 Michigan Infantry, Compiled Military Service Records of Volunteer Soldiers Who Served From the State of MI, Record Group 94: Records of the Adjutant General's Office., p. 2.</i> 10. <i>Record of Service of Michigan Volunteers in the Civil War, 1861-1865, Volume 24 (Reprint, Detroit: Detroit Book Press), p. 7. Thomas A. Armstrong, Co. C, 24 Michigan Infantry, Compiled Military Service Records of Volunteer Soldiers Who Served From the State of MI, Record Group 94: Records of the Adjutant General's Office., p. 6.</i> 11. <i>Thomas Armstrong entry, 1870 US Census, Population Schedule, Livonia Township, Wayne, MI (National Archives Microfilm Publication M593, roll 709), p. 231.</i> 12. <i>Thomas Armstrong, 1880 US Census, Population Schedule, Livonia, Wayne, MI, supervisor's district 1, enumerator's district 256 (National Archives Microfilm Publication T9, roll 610), p. 34.</i> 13. <i>Thomas A. Armstrong, Pension Application #567461, certificate #453710; Record Group 15; Department of Veterans Affairs; National Archives Building, Washington, DC.</i> 14. <i>Charles Westfall, app #153594, cert #111015, widow's app #1235506, RG 15, Department of Veterans Affairs, p. 40.</i> 15. <i>1890 Special Schedule, Michigan (National Archives Microfilm Publication M123, roll 17), p. 945.</i> 16. <i>Thomas A. Armstrong, Pension Application #567461, certificate #453710; Record Group 15; Department of Veterans Affairs; National Archives Building, Washington, DC, p. 118.</i> 17. <i>Ezra Derby entry, 1860 US Census, Population Schedule, Novi, Oakland, MI, (National Archives Microfilm Publication M653, roll 556), p. 2.</i> 18. <i>Thomas A. Armstrong, Pension Application #567461, certificate #453710; Record Group 15; Department of Veterans Affairs; National Archives Building, Washington, DC, p. 85.</i> 19. <i>Thomas A. Armstrong, Pension Application #567461, certificate #453710; Record Group 15; Department of Veterans Affairs; National Archives Building, Washington, DC, p. 109.</i> 20. <i>Thomas A. Armstrong, Pension Application #567461, certificate #453710; Record Group 15; Department of Veterans Affairs; National Archives Building, Washington, DC, p. 114.</i> 21. <i>Thomas A. Armstrong, Pension Application #567461, certificate #453710; Record Group 15; Department of Veterans Affairs; National Archives Building, Washington, DC, p. 116.</i>