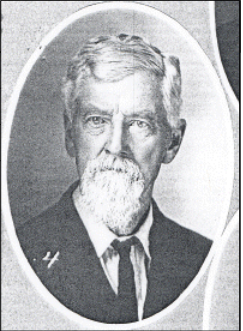


Samuel Joy

Husband		Samuel Joy	
Born	24 Nov 1842	Redford, Wayne, MI ¹	
Christened			
Died	11 Dec 1915	Salina, Saline, KS ²	
Buried	13 Dec 1915	Salina, Saline, KS ³	
Father	Bennett Joy (1794-1867)		
Mother	Sally Wood (1803-1848)		
Marriage			
Events			
1. He appeared on the census on 26 Jul 1850 in Redford, Wayne, MI. ⁴			
2. He appeared on the census on 26 Jun 1860 in Redford, Wayne, MI. ⁵			
3. He served in the military Co. C, 24th Michigan Infantry on 9 Aug 1862 in Plymouth, Wayne, MI. ⁶			
4. Military Promotion: Corporal, 1 Dec 1862. ⁷			
5. Military Promotion: Sergeant, 19 Jan 1863. ⁸			
6. Wounded: Gunshot left forearm, 1 Jul 1863, Gettysburg, Adams, PA. ⁹			
7. He was in McDougall Hospital on 12 Jul 1863 in Fort Schyler, NY. ¹⁰			
8. Military Transfer: Co. A, 21st VRC, 15 Feb 1864. ¹¹			
9. He was discharged from the military Co. A, 21st VRC on 2 Mar 1865 in Trenton, NJ. ¹²			
10. He was contained in a pension record on 20 Nov 1865. ¹³			
11. 1870 Census: 29 Jun 1870, Nankin Township, Wayne, MI. ¹⁴			
12. He appeared on the census on 9 Jun 1880 in Plymouth, Wayne, MI. ¹⁵			
13. Enrollment: 1883, Dorrance, Russell, KS.			
14. Resided: 21 Feb 1883, Dorrance, Russell, KS. ¹⁶			
15. He appeared on the census on 22 Jul 1885 in Plymouth Township, Russell, KS. ¹⁷			
16. Roster: 1887, Dorrance, Russell, KS. ¹⁸			
17. He appeared on the census on 15 Jun 1895 in Plymouth Township, Russell, KS. ¹⁹			
18. He appeared on the census on 1 Jun 1900 in Plymouth, Russell, KS. ²⁰			
19. Resided: 1904, Dorrance, Russell, KS. ²¹			
20. He appeared on the census on 1 Mar 1905 in Plymouth Township, Russell, KS. ²²			
21. He owned land 215 N. Penn Ave. Lot 24 Block 6 on 7 Feb 1910 in Salina, Saline, KS. ²³			
22. He owned land 259 N. Penn, Lot 2, Block 6 on 20 Apr 1910 in Salina, Saline, KS. ²⁴			
23. He appeared on the census on 21 Apr 1910 in Salina, Saline, KS. ²⁵			
24. He had an estate probated on 12 Aug 1911 in Salina, Saline, KS. ²⁶			
25. GAR: John A. Logan Post # 127, 1912, Salina, Saline, KS. ²⁷			
26. He appeared on the census on 1 Mar 1915 in Salina, Saline, KS. ²⁸			



Samuel Joy

Wife	Private (details suppressed for this person)	
Born		
Christened		
Died		
Buried		
Father	De Forest Brown (1800-1851)	
Mother	Mary B. <Durfee> (1809-1886)	



Children

1	F	Mary M. Joy	
Born	Cir 1867	MI ¹⁵	
Christened			
Died	3 Oct 1867 ²⁹		
Buried			
Spouse	Smith (-)		

Events

- 1870 Census: 29 Jun 1870, Nankin Township, Wayne, MI.³⁰
- She appeared on the census on 9 Jun 1880 in Plymouth, Wayne, MI.¹⁵
- She appeared on the census on 22 Jul 1885 in Plymouth Township, Russell, KS.¹⁷

2	M	Fred D. Joy	
Born	15 Jan 1874	MI ³¹	
Christened			
Died	20 Jun 1954 ³		
Buried	22 Jun 1954 ³		
Spouse	Mamie Kathryn <Joy> (1881-1937)	Cir 1897 ²⁰	

Events

- He appeared on the census on 9 Jun 1880 in Plymouth, Wayne, MI.¹⁵
- He appeared on the census on 22 Jul 1885 in Plymouth Township, Russell, KS.¹⁷
- He appeared on the census on 1 Jun 1900 in Plymouth, Russell, KS.²⁰
- He appeared on the census on 1 Mar 1905 in Plymouth Township, Russell, KS.²²
- He appeared on the census on 1 Mar 1915 in Salina, Saline, KS.²⁸

Source Citations

- Bennet Joy entry, 1850 US Census, Population Schedule, Redford, Wayne, MI, (National Archives Microfilm Publication M432). Samuel Joy entry, 1900 US Census, Population Schedule, Plymouth, Russell County, Kansas, (National Archives Microfilm Publication T623), 1. Samuel Joy, Pension Application #78783, certificate #53325; Record Group 15; Department of Veterans Affairs; National Archives Building, Washington, DC, p. 22, 35.
- Samuel Joy, Pension Application #78783, certificate #53325; Record Group 15; Department of Veterans Affairs; National Archives Building, Washington, DC, p. 36. "Burial of Samuel Joy," Salina Sun (Salina, KS, 1915), p.1.
- City of Salina, Kansas, Gypsum Hill Cemetery records.
- Bennet Joy entry, 1850 US Census, Population Schedule, Redford, Wayne, MI, (National Archives Microfilm Publication M432).
- Bennett Joy entry, 1860 U.S. Census, Population Schedule, Redford, Wayne, MI (National Archives Micropublication M653, roll 564), p. 60.
- Samuel Joy, Pension Application #78783, certificate #53325; Record Group 15; Department of Veterans Affairs; National Archives Building, Washington, DC, p. 7. Samuel Joy, Co. C, 24 Michigan Infantry, Compiled Military Service Records of Volunteer Soldiers Who Served From the State of MI, Record Group 94: Records of the Adjutant General's Office, p. 8.

7. Samuel Joy, Co. C, 24 Michigan Infantry, *Compiled Military Service Records of Volunteer Soldiers Who Served From the State of MI, Record Group 94: Records of the Adjutant General's Office*, p. 2.
8. Samuel Joy, Co. C, 24 Michigan Infantry, *Compiled Military Service Records of Volunteer Soldiers Who Served From the State of MI, Record Group 94: Records of the Adjutant General's Office*, p. 3.
9. Samuel Joy, Pension Application #78783, certificate #53325; Record Group 15; Department of Veterans Affairs; National Archives Building, Washington, DC, p. 5. Samuel Joy, Co. C, 24 Michigan Infantry, *Compiled Military Service Records of Volunteer Soldiers Who Served From the State of MI, Record Group 94: Records of the Adjutant General's Office*, p. 7.
10. Samuel Joy, Pension Application #78783, certificate #53325; Record Group 15; Department of Veterans Affairs; National Archives Building, Washington, DC, p. 26. Samuel Joy, Co. C, 24 Michigan Infantry, *Compiled Military Service Records of Volunteer Soldiers Who Served From the State of MI, Record Group 94: Records of the Adjutant General's Office*, p. 4.
11. Samuel Joy, Pension Application #78783, certificate #53325; Record Group 15; Department of Veterans Affairs; National Archives Building, Washington, DC, p. 29. Samuel Joy, Co. C, 24 Michigan Infantry, *Compiled Military Service Records of Volunteer Soldiers Who Served From the State of MI, Record Group 94: Records of the Adjutant General's Office*, p. 2. Samuel Joy, Co. A, 21 VRC, *Compiled Military Service Records of the Veterans Reserve Corps, Record Group 94: Records of the Adjutant General's Office*, p. 2.
12. Samuel Joy, Pension Application #78783, certificate #53325; Record Group 15; Department of Veterans Affairs; National Archives Building, Washington, DC, p. 6, 22. Samuel Joy, Co. A, 21 VRC, *Compiled Military Service Records of the Veterans Reserve Corps, Record Group 94: Records of the Adjutant General's Office*, p. 4.
13. Samuel Joy, Pension Application #78783, certificate #53325; Record Group 15; Department of Veterans Affairs; National Archives Building, Washington, DC, p. 7.
14. Samuel Joy entry, 1870 US Census, Population Schedule, Nankin Township, Wayne, MI (National Archives Microfilm Publication M593, roll 709), p. 65.
15. 1880 US Census, Population Schedule, S 1/2 Plymouth, Wayne, MI, supervisor's district 1, enumerator's district 260 (National Archives Microfilm Publication T9), p. 8.
16. Samuel Joy, Pension Application #78783, certificate #53325; Record Group 15; Department of Veterans Affairs; National Archives Building, Washington, DC, p. 11.
17. Samuel Joy entry, 1885 Kansas Decennial Census, Plymouth Township, Russell, Kansas, Vol. 235, Microfilm 10370, roll 120, p. 14.
18. Roster of Michigan Soldiers, Residing in Kansas, 1887.
19. Samuel Joy, 1895 Kansas Decennial Census, Plymouth Township, Russell, Volume 331, Microfilm 5391, roll 136, p. 2.
20. Samuel Joy entry, 1900 US Census, Population Schedule, Plymouth, Russell County, Kansas, (National Archives Microfilm Publication T623), 1.
21. A Roster of the Surviving Members of the Iron Brigade of the War of the Great Rebellion or American Civil War, 1861 to 1865 (1904), p. 51.
22. Samuel Joy entry, 1905 Kansas Decennial Census, Plymouth Township, Russell, KS, Volume 376, Microfilm 4735, roll 141, p. 32.
23. Numerical Index, Riverside Park Addition to the City of Salina, p. 347.
24. Numerical Index, Riverside Park Addition to the City of Salina, p. 336.
25. Samuel Joy entry, 1910 US Census, Population Schedule, Salina, Salina County, Kansas (National Archives Microfilm Publication T624, Roll 455), sheet 92.
26. Samuel Joy probate, Saline County Kansas Probate Court, case #2394 .
27. Mary Maley, comp, *Military Records of Saline County, Kansas, 1861-1991* (Salina, Kan.: Smoky Valley Genealogical Society & Library, 1998), p. 99.
28. Fred D. Joy entry, 1915 Kansas Decennial Census, Salina, Saline, Volume 260, roll 9588.
29. Samuel Joy, Pension Application #78783, certificate #53325; Record Group 15; Department of Veterans Affairs; National Archives Building, Washington, DC, p. 35.
30. 1870 US Federal Census Population Schedule, Plymouth, Wayne, MI, National Archives, Washington, DC. (Heritage Quest 593-710), p. 65.
31. 1880 US Census, Population Schedule, S 1/2 Plymouth, Wayne, MI, supervisor's district 1, enumerator's district 260 (National Archives Microfilm Publication T9), p. 8. Samuel Joy entry, 1900 US Census, Population Schedule, Plymouth, Russell County, Kansas, (National Archives Microfilm Publication T623), 1. Samuel Joy, Pension Application #78783, certificate #53325; Record Group 15; Department of Veterans Affairs; National Archives Building, Washington, DC, p. 34. City of Salina, Kansas, Gypsum Hill Cemetery records.